



HAMMONTREE HIGHLIGHTS



**A Newsletter from Hammontree & Associates, Ltd.
and Morris Knowles & Associates, Inc.**

(A Hammontree Company)

Engineers - Planners - Scientists - Surveyors

Principally Serving Ohio, Pennsylvania, West Virginia

Civil Site - Municipal - Environmental Science - Soil Evaluations
Transportation - Bridge - Telecommunication - Landscape Architecture
Utica and Marcellus Shale - Pipelines - Surveying - U.A.V. (Drone) Services

Summer 2021

Massillon City Schools Operations Center Improvements and Expansion

Article on Page 2

Inside this Edition

- Gardner Pie Expansion
- Village of Lakemore
Hidden Lakes
Subdivision Construction
Inspection Services
- Tiger Sand & Gravel
Waterline Relocation
Project
- New Piada Restaurant in
North Fayette, PA.
- Landscape Architecture
Services
- Massillon City Schools
Operations Center

New Piada Restaurant in North Fayette, PA

Article on Page 3

Background photo: Massillon City Schools Operations
Center under construction.

Continued from front page

Massillon City Schools Operations Center Improvements and Expansion

Hammontree & Associates was hired by John Patrick Picard, Inc., Architects for the Massillon City Schools Operations Facility renovations and additions. The project includes demolition and renovations to the existing facility, a new bus parking area, additional parking and utility design. The cost of this project is \$4.2 million.

Services Provided Include:

- Base Survey, Replat and Mapping
- Civil Site Design Including Water Quality and Drainage/Storm Sewer Design
- Permitting Assistance with the City and Stark SWCD



Photo shown above: Massillon City Schools Operations Center under construction

Village of Lakemore - Hidden Lakes Subdivision Construction Inspection Services

The Village of Lakemore hired Hammontree & Associates to provide construction observation for the construction of the new Hidden Lakes Subdivision in the Village.

This project involved the installation of sanitary sewers, storm sewers, water mains, roadway, curbs and sidewalks. Hammontree was also responsible for verifying passing results for all material and installation testing conducted by the contractor and recorded as-built information for the Village's utility location documents.

Services Provided Include:

- Construction Observation
- As-Built Documentation



Photo shown above:
Construction observation of a storm sewer installation at Hidden Lakes Subdivision in the Village of Lakemore

HAMMONTREE & ASSOCIATES, LIMITED

5233 Stoneham Road
North Canton, Ohio 44720
Phone 330-499-8817
Toll Free 1-800-394-8817

104 Newell Avenue
St. Clairsville, Ohio 43950
740-695-7237

www.hammontree-engineers.com

www.morrisknowles.com

Morris Knowles & Associates, Inc.

A Hammontree Company

443 Athena Drive, Delmont, PA 15626
724-468-4622

**VOL. XLII No. 2
Summer 2021**
Hammontree Highlights
is a
biannual publication.

ACEC
AMERICAN COUNCIL OF ENGINEERING COMPANIES



Officers and Board of Directors

Charles F. Hammontree, P.E., P.S.
CEO of Hammontree and Morris Knowles

Michael M. Vale, P.E., CPESC
Executive Vice President of Hammontree and Morris Knowles

William P. Utzman, P.E., CPESC
President of Morris Knowles

Mark M. Zimmerman, P.E., CPESC, CPSWQ
Vice President of Morris Knowles

New Piada Restaurant in North Fayette, PA

Morris Knowles & Associates, Inc., (A Hammontree Company), was hired by the Piada Group for a new site at The Pointe at North Fayette Plaza in Allegheny County, PA. Morris Knowles provided civil site engineering, permitting and surveying.

The new Piada Restaurant will feature an order pickup lane for orders placed in advance in addition to the indoor seating and ordering area.

Services Provided Include:

- Boundary/Topographic Survey
- Civil Site Design
- Local, County and State Permitting



Above rendering of the future Piada Restaurant in North Fayette, PA is courtesy of the Piada Group

Landscape Architecture Services



Photo shown above: ADA ramp project for NEXT Architecture and Comcast in Pennsylvania by Morris Knowles & Associates, A Hammontree Company.

Landscape Architecture is offered at each of our offices. Our registered professional landscape architect is registered in Ohio, Pennsylvania and West Virginia.

This department is proficient at designing outdoor spaces that meet the client's needs and wishes while also meeting the requirements of the municipality.

The ordinance requirements for landscaping designs varies from municipality and is ever changing with no two project sites the same. Our staff easily adapts and adjusts the design layouts to blend the owner's intentions with the regulatory requirements while creating an aesthetically pleasing and enjoyable environment for the project as the end result.

Gardner Pie Expansion



Photo shown above: Gardner Pie Company in Summit County, OH

Hammontree & Associates was hired by Structura Architects, Ltd. in Akron, Ohio for civil engineering and surveying for the Gardner Pie Company Expansion at 191 Logan Parkway in Coventry Township, Summit County, Ohio.

The project consists of several expansion phases and the civil site design incorporated current and future expansion phases in grading and utility design. Hammontree developed civil site drawings and assisted with permitting through Summit County, Ohio.

Services Provided Include:

- Surveying and Base Mapping
- Lot Consolidation Plat
- Civil Site Design and Permitting
- Infiltration Basin Design for Stormwater

Tiger Sand & Gravel Waterline Relocation Project

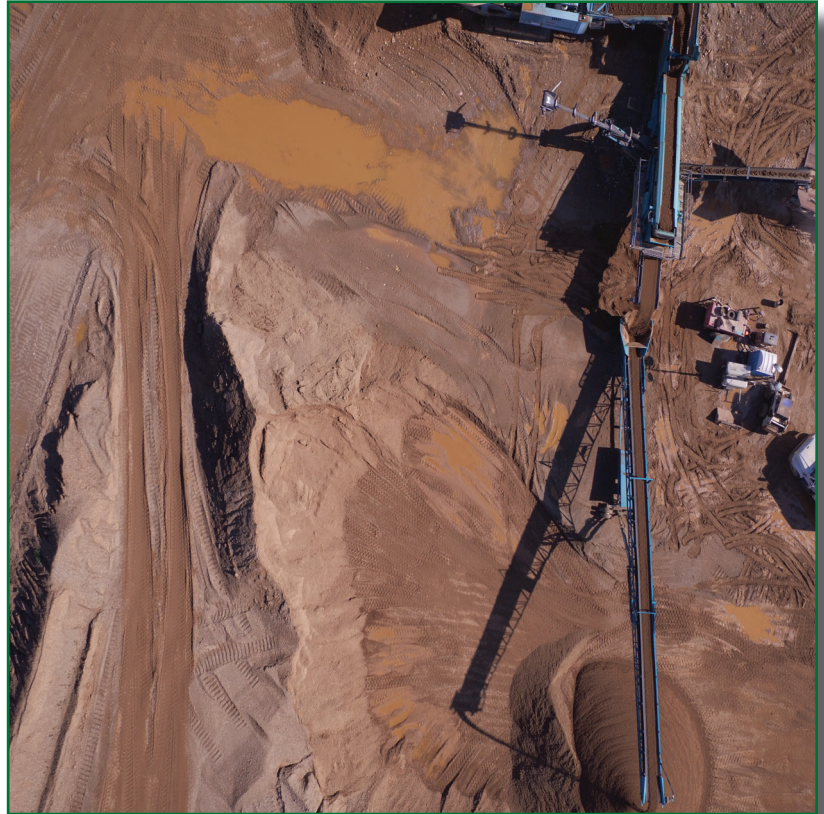
Tiger Sand & Gravel hired Hammontree & Associates for a waterline relocation in order to expand the sand and gravel mining operations. A topographic corridor was provided of 600 feet by 1700 feet to create profiles and topography for the alignment.

Services Provided Include:

- U.A.V. (Drone) Surveying and Photos
- Waterline Design

Photo shown right taken with a U.A.V. (Drone) of Tiger Sand & Gravel Waterline Project

**For more information on our services we
offer call us at:
330-499-8817 (OH)
724-468-4622 (PA)**



HAMMONTREE & ASSOCIATES, LIMITED and **MORRIS KNOWLES & ASSOCIATES, INC.**

A Hammontree Company

Offices in Ohio and Pennsylvania

Engineers - Planners - Scientists - Surveyors

5233 STONEHAM ROAD
NORTH CANTON, OHIO 44720