



HAMMONTREE HIGHLIGHTS



**A Newsletter from Hammontree & Associates, Ltd.
and Morris Knowles & Associates, Inc.**

(A Hammontree Company)

Engineers - Planners - Scientists - Surveyors

Serving Ohio, Pennsylvania and West Virginia

Utica and Marcellus Shale - Pipelines - U.A.V. (Drone) Services - Transportation - Bridge
Civil Site - Municipal - Environmental Science - Landscape Architecture
Field Construction Monitoring Service - Surveying - Map Displays

Winter 2020

Inside this Edition

- Hammontree's Headquarters at the Center of the Akron-Canton "Metrolplex"
- Morris Knowles Selected for Huntingdon Marketplace Building and the Goddard School
- Highlighting the St. Clairsville, Ohio Office
- United Architectural Metals Addition Complete
- Greentree Shopping Center in Scott Township, PA
- New Developments in PA and OH
- Environmental Science and Soil Evaluation Department Continues to Expand

Monroe County Historic Concrete Arch Bridge Restored

Article on Page 2

**Highlighting Our
St. Clairsville, Ohio Office**

Article on Page 3

Continued from front page

Monroe County Bridge Restored

Hammontree was hired by the Monroe County Engineer for the rehabilitation of a historic concrete arch bridge in Monroe County. The bridge was constructed around 1927 by the Luten Bridge Company and spans the Clear Fork of the Little Muskingum River. The bridge is a single-span reinforced concrete closed-rib arch with an integral reinforced concrete deck and abutments.

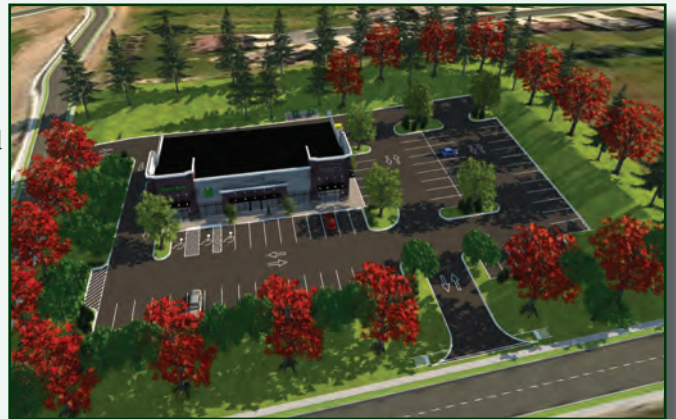
Hammontree designed a new concrete deck overlay to preserve as much of the original structure as possible. The edges of the deck were removed and replaced. Hammontree retained the historic bridge elements while upgrading the overall condition of this historic structure.



Photo above: Monroe County Bridge MOE-TR313-00.04

Morris Knowles Selected as the Design Engineer and Surveyor for Huntingdon Marketplace Multi-Tenant Building and The Goddard School

Morris Knowles was hired by Colony Realty Associates, LP for civil site design and surveying for a 7,000 square foot multi-tenant building in North Huntingdon Township, PA. This building is just the first part of an overall master plan for the 20 acre parcel across from the Walmart, off Mills Drive. The site encompasses approximately 2.3 acres at the corner of Mills Drive and Ronda Court. Construction has already begun and anticipated to be completed by early 2020.



Sketch above: Future Huntingdon Marketplace multi-tenant building in North Huntingdon Township, PA

In addition to the multi-tenant building, Morris Knowles was hired by Colony Realty Associates, LP for civil site design and surveying for the 9,000 square foot Goddard School in North Huntingdon Township, PA. The development will provide educational opportunities in the surrounding community. The development is currently under construction at the corner of Mills Drive and Barnes Lake Road and anticipated to be completed by early 2020.

HAMMONTREE & ASSOCIATES, LIMITED

5233 Stoneham Road
North Canton, Ohio 44720

Phone 330-499-8817
Toll Free 1-800-394-8817

104 Newell Avenue
St. Clairsville, Ohio 43950
740-695-7237

www.hammontree-engineers.com

www.morrisknowles.com

Morris Knowles & Associates, Inc.
A Hammontree Company

443 Athena Drive, Delmont, PA 15626
724-468-4622

VOL. XL No. 1
Winter 2020
Hammontree Highlights
is a
biannual publication.

ACEC
AMERICAN COUNCIL OF ENGINEERING COMPANIES



Officers and Board of Directors

Charles F. Hammontree, P.E., P.S.
CEO of Hammontree and Morris Knowles

Michael M. Vale, P.E., CPESC
Executive Vice President of Hammontree and
Morris Knowles

William P. Utzman, P.E., CPESC
President of Morris Knowles

Mark M. Zimmerman, P.E., CPESC, CPSWQ
Vice President of Morris Knowles



HAMMONTREE HIGHLIGHTS EXTRA



Highlighting the St. Clairsville, Ohio Office

104 Newell Avenue, St. Clairsville, Ohio 43950 Phone: 740-695-7237

www.hammontree-engineers.com www.morrisknowles.com

Hammontree's St. Clairsville, Ohio office opened in January 2012 and is located in downtown St. Clairsville, Ohio on Newell Avenue. This office is a full service, full time, civil engineering and survey office with staff that reside in the local area.

Services Include:

- Oil and Gas Services - Horizontal and Vertical Well Pad Designs, GIS Well Inventory Plats and Well Spacing Planning, Roadway Inspections, Roadway Upgrade Design, E&S Plan Design and Reports and Environmental Services
- Environmental and Soil Evaluation Services - Phase I Environmental Site Assessments, Endangered and Sensitive Species Protection Reports; Wetland Delineations and Permitting, Site and Soil Evaluation for Septic Systems
- Civil Engineering - Civil Site Design, Subdivision Design and Permits, Site Grading, Utility Plans and Permits, Residential, Commercial and Industrial Planning, Zoning and Planning Permits, Public Meeting Presentations, Storm Water Management, Detention Design and Permits
- Municipal Engineering - Water & Wastewater Treatment Plant Design and Permits, Waterline and Booster Pump Design and Permits, Sanitary Sewer Gravity Line and Force Main Design and Permits, Lift Station Design and Permits, and Septic System Design
- Construction Inspection and Management Services
- Surveying - Topographic Surveys, Lot Splits, ALTA/ACSM Surveys, GIS Data Collection, GPS Position Systems, Subdivision Plats, Floodplain Certifications and FEMA Map Amendments, Mortgage Location Surveys, and Construction Staking for Commercial and Residential Properties and U.A.V. (Drone) Services



Photo shown above: Hammontree has designed multiple soldier pile and lagging walls to remediate slips along public and private roadways. We have completed both publicly funded projects in coordination with county engineers as well as privately funded projects.



Photo shown above: Hammontree has completed road assessments and condition reports for multiple roads in the Ohio Valley Region. Road upgrade plans have been created when road analysis shows the road is not in a condition of handling the proposed traffic load. Road upgrades can include subgrade and pavement design, road widening, road realignment and vertical curve realignments.

Hammontree's St. Clairsville Office Highlighted Projects Include:

Candlewood Suites

Ohio Valley Mall, St. Clairsville, Ohio

Corporex Developers hired Hammontree as the primary civil engineer for this new hotel at the Ohio Valley Mall. Hammontree provided an ALTA survey (pre-development and post development), easements, site demolition, design, utilities, grading, and stormwater controls. Hammontree coordinated with the architect and electrical engineer on site features, including a swimming pool, gazebo, and site lighting.



Davita Kidney Care

Bridgeport, Ohio

Alex Roush Architects hired Hammontree to provide surveying and civil engineering for this new kidney clinic with parking areas and a driveway that has entrances on U.S. 40. Hammontree provided a topographic ALTA survey (pre-development and post-development), site demolition, civil site design, utilities, grading and stormwater controls.



Grove Apartments

Morristown, Ohio

Old National Road LLC, hired Hammontree as the primary civil site engineer and surveyor for this 10-acre redevelopment for a new apartment complex. Hammontree provided a Phase I Environmental Site Assessment, topographic ALTA survey, civil site design, utilities, grading, stormwater controls, including two detention ponds, a parking lot and driveway.



WVU Cancer Institute Reynolds Memorial Hospital

Glen Dale, WV

Breisch & Crowley, LLC hired Hammontree to provide surveying and civil engineering for driveway improvements and a retaining wall at this cancer center in Glen Dale, West Virginia. Our surveyors made a topographic survey and staked out the site for construction. The improvements consisted of an ADA accessible passenger drop-off to improve the safety of pedestrians between the main entrance and parking lot. Project features include a short retaining wall with a concrete slab and pedestrian guardrails to make the driveway wider and level.



United Architectural Metals Addition Complete



Photo shown above: United Architectural Metals

Hammontree was hired by Structura Architects, Ltd., in Akron, Ohio, for civil site design and surveying for a 50,000 square foot building addition for United Architectural Metals at 7830 Cleveland Avenue NW in North Canton, Ohio. Hammontree also assisted with permitting through the City of North Canton.

Morris Knowles Retained for Additional Developments in Pennsylvania and Ohio

Morris Knowles has been retained as the engineer for the Jayhawk Commons development in Jeannette, Pennsylvania. The 4.7 acre tract of land formerly housed the Monsour Hospital at the corner of US Route 30 and Pennsylvania Boulevard and was demolished in 2016 under the Westmoreland County Industrial Development Corporation. Morris Knowles previously provided surveying services to assist in closing the property for Jayhawk Commons, LLC.

Morris Knowles has also been retained as the engineer for Armstrong Development Properties, Inc. on multiple sites throughout western Pennsylvania and Ohio. Morris Knowles has provided feasibility reports, conceptual site plans, and 3D renderings to assist Armstrong Development Properties, Inc. in the development process of these future sites.

Greentree Shopping Center ADA Compliant

Morris Knowles was hired to analyze the Greentree Shopping Center in Scott Township, Pennsylvania (*Photo shown right*). Morris Knowles created a solution to help alleviate flooding concerns in the area and increase ADA compliant parking on the site. Services provided include: civil engineering, bid specifications, bidding administration and construction observation services.

Environmental Science and Soil Evaluation Department Continues to Expand



Photo shown above left to right: Wetland Area; Soil Evaluation

The Environmental Science and Soil Evaluation Department provides services in Ohio, Pennsylvania, and West Virginia. Our Certified Professional Soil Scientist (CPSS)/Wetland Specialist and his department, provide a wide variety of environmental services to support all construction and site development projects. This includes soil evaluations for new and replacement septic systems. Services Include:

- Environmental Site Assessments
- Wetland Determinations
- Site Soil Evaluations for Septic Systems
- Wetland Mitigation
- Stream and Wetland Crossing
- Wetland and Stream Assessments, Delineation and Mapping
- Clean Water Act and Permitting
- Impact Analysis; Avoidance and Minimization Strategies
- Agency Coordination for Endangered Species Act and Historic Preservation Act.

Some of the agencies **Hammontree and Morris Knowles** work with on environmental related permitting and planning include: The U.S. and State EPA, Department of Energy, The Army Corps of Engineers, Department of Natural Resources, and local, county and township agencies.



Hammontree Headquarters at the Center of the Akron-Canton “Metroplex”

Hammontree’s headquarters is at the center of the newly named Akron-Canton “Metroplex” with a combined 1.1 million people. This area covers the Canton-Massillon, Stark and Carroll Counties and Summit and Portage Counties. Hammontree is a full service civil engineering and survey company located near Diebold Nixdorf, The Timken Company and The Akron Canton Airport. We have provided professional service for over 53 years, with additional offices in St. Clairsville, Ohio and Delmont, PA. (Morris Knowles). **Hammontree & Morris Knowles** have a project history range of multi-million dollar public works and major commercial projects to design services for individual businesses and homeowners. Public clients range in size from rural communities to county, state and federal government.

Departments Include:

- Civil Site Engineering and Design
- Transportation: Bridge, Highway, Trails, and Bikeways
- Municipal Engineering
- Environmental Science
- Landscape Architecture
- Construction Administration Services
- Oil and Gas Energy Support Services
- Telecommunication Support Services
- Surveying (Including U.A.V. (Drone) Surveying with Five (5) F.A.A. Licensed Remote Pilots)

Each office is staffed with registered engineers and surveyors who ensure projects are managed with prompt professional service.



Photos shown left to right: Akron Canton Airport new parking and new entrance/exit road and the City of Cuyahoga Falls Front Street Downtown Transformation Design-Build Project.



HAMMONTREE & ASSOCIATES, LIMITED and **MORRIS KNOWLES & ASSOCIATES, INC.**

A Hammontree Company

Offices in Ohio and Pennsylvania

Engineers - Planners - Scientists - Surveyors

5233 STONEHAM ROAD
NORTH CANTON, OHIO 44720